

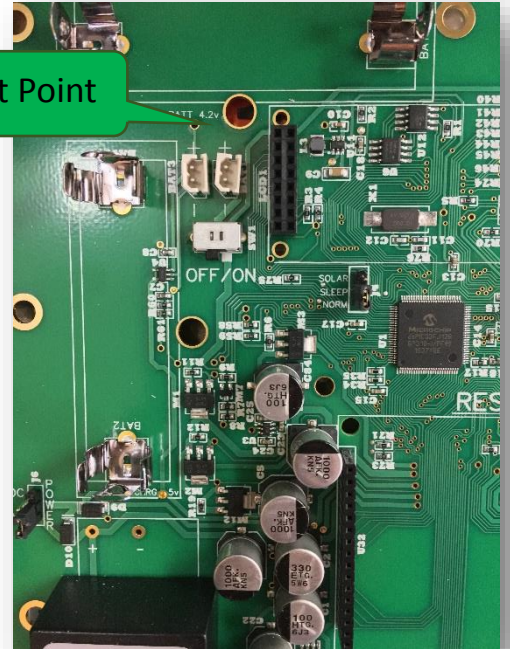
# Battery/Charger Check-List

**MUST GET POWER TO THE UNIT/RUN PIVOT FOR A FEW HOURS BEFORE TESTING! (CHR5v Light on)**

## **Charger Test:**

1. Must have a DC Voltmeter!
2. Make sure power is ON (**CHR5v Light must be ON**).
3. Turn the AgSense Unit power switch off.
4. Unplug the battery from the board.
5. Check the BAT4.2v hole – voltage must be 4.2v – if not, board must be replaced.

Batt 4.2v Test Point



## **Battery test:**

6. Must have a DC Voltmeter!!
7. Make sure unit has NO power to it (**CHR5V Light must be OFF**), and Unit power switch “ON”.
8. Make sure the battery is plugged into the board, and check the battery voltage at the BAT 4.2v hole.
  - a. If the battery voltage is 3.7v-4.2v, battery is likely good.
  - b. If the battery voltage is between 3.3v-3.6v, battery likely just needs more time to charge. Turn the power back on to the unit (CHR5v Light on) and let the battery charge a few more hours. Then, start at Step 6 again, and if the battery is still low, replace the battery.
  - c. If the battery voltage is 0, the battery is likely bad. Turn power back on to the unit (CHR5v Light on) and let the battery charge a few more hours. Start at Step 6 again, and if the battery is still low, replace the battery.
9. Note: If the unit has a pressure transducer, unplug the pressure transducer, let the unit charge awhile, and start at step 6 again.

